

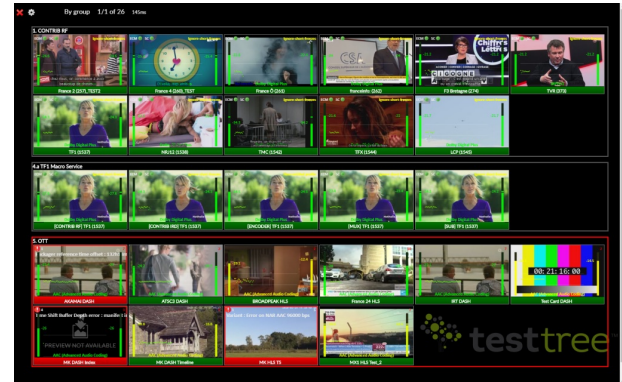
STREAMPROBE

OTT

One single Consistent Monitoring Solution for Contribution / Encoding / Packaging

powered by **aws** STREAMPROBE SOLUTION PROVIDES A CENTRALIZED OVERVIEW

OF THE **SERVICE AVAILABILITY AND VIDEO QUALITY** THROUGHOUT ALL THE STRATEGIC STAGES OF THE MEDIA PROCESSING & DELIVERY FLOW, BY 24/7 MONITORING. IDEAL FOR ALL TV SERVICE PROVIDERS & NETWORK OPERATORS – LINEAR BROADCAST TV, IPTV, CABLE TV, SATELLITE TV, OTT, VOD, NPVR – TRANSPORT CONTRIBUTION & DISTRIBUTION AND SERVICE PLATFORM PROVIDERS, LOOKING TO ENSURE THE BEST END-USER QUALITY OF EXPERIENCE ALL WHILE OPTIMIZING OPEX.



APPLICATIONS

- **End-to-end Availability (QoS) and Quality (QoE) for all Video Services**
- **Increase uptime** by detecting issues before your customers do
By 24/7 real-time supervision & alerting
- **Optimize daily operation & maintenance**
Drill down analysis, on-error proof recording
- **Quality Reports generation for SLA commitments**
- **Compliance 24/7 recording**

QoS - ABR Service Availability & Integrity

- Full **HLS, MPEG-DASH** monitoring (playlist and profiles)
- **HTTP connection** quality and streams availability
- **Complete or partial monitoring** – adapt the monitoring load to your infrastructure (Origin load and network CDN capacity)

Live Thumbnail Mosaic Wall

- **All services view at-a-glance** on a thumbnail wall, real-time update
- **Highly customisable per user**: grouping, audio levels, subtitles, penalty box
- **Monitoring by exception**: display only faulty services – penalty box

Recording

- **24/7 compliance recording**
- **Proof recording on-error** on fault detection
- **Schedule recordings** at predefined date – event recording
- **Easy access** to all recordings directly via the **web GUI**

DRM support

- ABR streams decryption capabilities
- Via **direct Key Server access** (proprietary, CPIX)
- **CENC, Sample-AES, AES-128** – Widevine, FairPlay, PlayReady

BENEFITS

- **One single unified web GUI for all Services Management**
Contribution, encoding, packaging, transport, linear, VOD
Fast training of operational teams
- All Services Quality view at-a-glance: **Live Thumbnail Mosaic Wall**
- **Pay as you grow with flexible licensing & deployment architecture**
HighDensity full SW solution
Centralized or distributed architecture, bare metal, virtualized, on-prem, cloud AWS

QoE - Service Audio/Video Quality

- Full content monitoring (all TS services and ABR profiles)
- **Audio & Video defect** detection: freeze, black screen, silence
- **TS Subtitles** DVB and Teletext: decoding and display
- **ABR Subtitles** HLS WebVTT and DASH TTML: decoding and display
- Video display: thumbnails & video streaming

Thumbnails History view

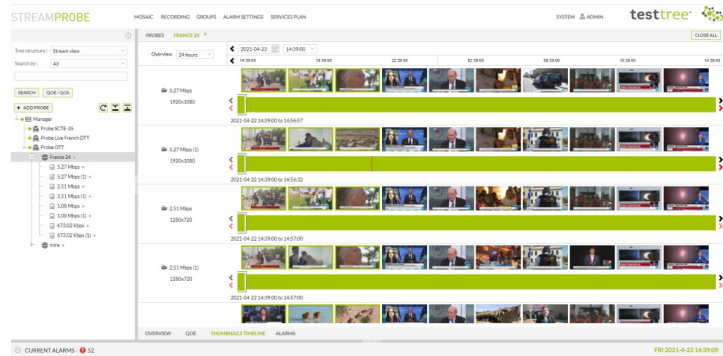
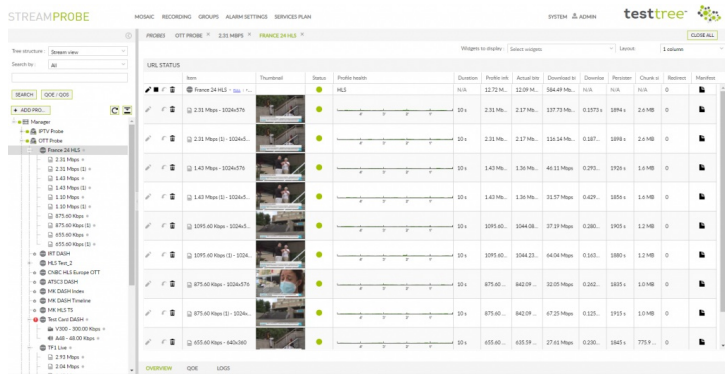
- ABR stream **Quality overview** in time: **alarms timeline** with **associated video thumbnails**
- **Visual tool for fault investigation** on all ABR stream's profiles, up to 7 days

VOD assets monitoring

- **xVOD** libraries, assets for **DAI, Catch-up/Replay, PVR**
- **Highly configurable monitoring campaigns** for both static and dynamic libraries
- Assets **provisioning: manual or automatic** (specific system integration)

System Integration & NBI

- **Configurable alarming thresholds**: general, daily and weekly alarm profiles **configurable per service**
- NMS integration: **SNMPv2** support for alarm traps
- Monitoring information available via an **open API** (HTTP/JSON API)
- **Service thumbnails & video streaming** capability for **3rd party dashboard** display



MONITORING FEATURES

QoS – ABR Service Availability & integrity check	<p>HLS, MPEG-DASH: playlist integrity & network performance check Manifest integrity check, content display & download Profile information: availability, type, bitrate statistics, codec, resolution, base and relative URL, playlist content/format, chunk number, media sequence, persistence... Chunk HTTP information: availability, length, bitrate statistics, playlist format HTTP connection time statistics: connection, DNS redirection, upload, download Complete monitoring: full playlist, profiles availability and content check Partial monitoring: playlist and/or profiles availability</p>
QoE – Service Audio/Video Quality	<p>Video defect detection: freeze, black screen, missing Intra frame Video encoding information: type, pixel format, profile, level, GOP structure and size, image count and weight, width, height, aspect ratio, frame rate and type, VB delay Audio defect detection: silence, level too low/high Audio encoding information: type, channel number and layout, sample rate and format Subtitles HLS WebVTT and DASH TTML: decoding and display Formats: MPEG-1 audio, MPEG-2 audio/video, AAC, HE-AAC, HE-AACv2, AC3 Dolby Digital, EAC-3 Dolby Digital Plus, SD & HD MPEG-4 AVC/H264, 4K HEVC/H265</p>
Thumbnail Mosaic view	<p>All services view at-a-glance on a thumbnail wall, real-time update Highly customisable per user: grouping, audio levels, subtitles, penalty box Monitoring by exception: display only faulty services – penalty box</p>
Thumbnails History view	<p>ABR stream Quality overview in time: alarms timeline with associated video thumbnails Visual tool for fault investigation on all ABR stream's profiles 7-day history depth</p>
Recording	<p>24/7 compliancy recording with predefined history depth On-error recording on fault detection Scheduled recording at predefined date & time Access the recordings directly via the GUI Preview of the recorded video Download capability (full or partial) Associated alarms timeline For both TS & ABR streams Storage capacity to dimension depending per project</p>
VOD assets monitoring	<p>xVOD libraries, assets for DAI, Catch-up/Replay, PVR (Personal Video Recorder) Highly configurable monitoring campaigns for both static and dynamic libraries Assets provisioning: manual/CSV file or automatic (specific system integration)</p>
DRM support	<p>ABR streams decryption capabilities Via direct Key Server access (proprietary, CPIX) CENC, Sample-AES, AES-128 – Widevine, FairPlay, PlayReady</p>
System Integration & NBI	<p>Configurable alarming thresholds: general, daily and weekly alarm profiles configurable per service Alarm log history CSV export SNMPv2 support for alarm traps Monitoring information available via an open API (HTTP/JSON API) Service thumbnails can be retrieved via API call – for 3rd party dashboard display</p>

ORDERING_CODES

StreamProbe OTT	Video QoS & QoE Monitoring for OTT Live services
<i>options</i>	<p>Bitrate (Mbps) : Define the bitrate capacity to monitor SW Pack ACCESS : Full QoS & QoE SW Pack PERFORMANCE : Operational Add-ons SW Pack ULTIMATE : Additional Services</p>

sales@test-tree.comwww.test-tree.com